

CHAUDHARY
SSH MALL
COMMERICAL COMPLEX

CHAUDHARY S.S.H MALL

Gorakhnath Mandir Rd.



SPECIFICATIONS

KEY FEATURES & FACILITIES

SSH Chaudhary Mall - A Destination For Business & Leisure

SSH Chaudhary Mall, being developed by HPGK Infra Pvt Ltd, is a landmark commercial complex strategically located near the revered **Gorakhnath Mandir**, and in close proximity to **CM Awas, GN School, and MP Polytechnic**. Surrounded by a dense residential population and steady religious footfall, it offers high visibility and excellent business potential. Designed as a **modern high-street destination with attractive facade and architecture**, the mall is **perfect for retail outlets, food joints, branded showrooms, and service-based businesse**.

The project is **well-connected through two key routes** — **Green City Road**, which leads to large housing societies and residential areas, and **NHAI's Sonauli–Nepal Road**, a busy transit corridor. With a smart **mix of anchor stores, fashion outlets, electronics hubs, and dining zones**, SSH Chaudhary Mall is built to serve over 1lakh families in its vicinity, making it a **vibrant hub for shopping, lifestyle, and business growth**.

Strategic Location

Situated just steps away from Gorakhnath Mandir and close to CM Awas, the mall enjoys prime positioning amidst educational institutions and dense residential zones, ensuring steady daily footfall

Smart Floor Layout

Designed with functionality in mind—UGF with 32 Anchor Spaces, and FF, SF, TF with 53 shops each, the layout supports a dynamic mix of retail, hypermarket, electronics, and dining outlets.

Premium High-Street Façade

Featuring modern architecture with a striking elevation, the project presents a high-street shopping experience that enhances both brand visibility and customer walk-ins

Versatile Commercial Mix

Ideal for electronics markets, retail showrooms, food joints, lifestyle brands, and service-based businesses, all under one roof for an engaging customer journey.

Expansive Land & Built-Up Area

Spread across 4,458.72 sq. meters of land, with a total constructed area of 8,820.38 sq. meters, the complex offers ample space for retail, lifestyle, and leisure activities.

Dual Road Connectivity

Direct access from both Green City Road and the NHAI Sonauli–Nepal Road makes it easily reachable for local residents as well as highway travelers and cross-border commuters.

First Mover Advantage

Located in a rapidly developing zone with a high concentration of families and religious visitors, giving early investors and brands a competitive edge in market capture.

Modern Amenities & RERA Registered Project

The mall is fully equipped with escalators, lifts, and ample parking for shopper convenience. SSH Chaudhary Mall is a RERA-approved development, assuring transparency, timely delivery, and legal safety.

Time saver: All government guidelines have been fulfilled.

RERA Registration No.: UPRERAPRJ979548, available at <https://www.up-rera.in/> | Building Plan No.: GKDA/BP/20-21/0265
Project Name: SSH Chaudhary Mall | The Urban Commercial Address

The project is being developed by HPGK Infra Pvt Ltd ("Developer"), a trusted name in real estate, known for delivering landmark commercial and residential spaces. SSH Chaudhary Mall is a thoughtfully designed urban commercial complex, set to redefine business and lifestyle experiences in Gorakhpur. Spread across 4,458.72 sq. meters with a total constructed area of 8,820.38 sq. meters, SSH Chaudhary Mall integrates retail, leisure, and entertainment into a single dynamic environment. The mall features a strategically planned floor layout: the Upper Ground Floor (UGF) includes 32 retail units along with anchor space; the First Floor (FF), Second Floor (SF), and Third Floor (TF) each offer 53 well-placed shops, creating uniformity and ease of navigation for customers. The layout is designed to support high footfall, flexible leasing options, and excellent visibility for brands. With seamless connectivity, modern infrastructure, and vibrant surroundings, SSH Chaudhary Mall is poised to become a sought-after destination for retailers, entrepreneurs, and lifestyle businesses in the region.

All project specifications shall be as per the final agreement executed with the Developer. Customers are advised to verify all necessary project-related details before making any investment or leasing decision. The official website of HPGK Infra Pvt Ltd is www.hpgkinfra.com. Please do not rely on any other website for information.

CHAUDHARY S.S.H MALL

Gorakhnath Mandir Rd.

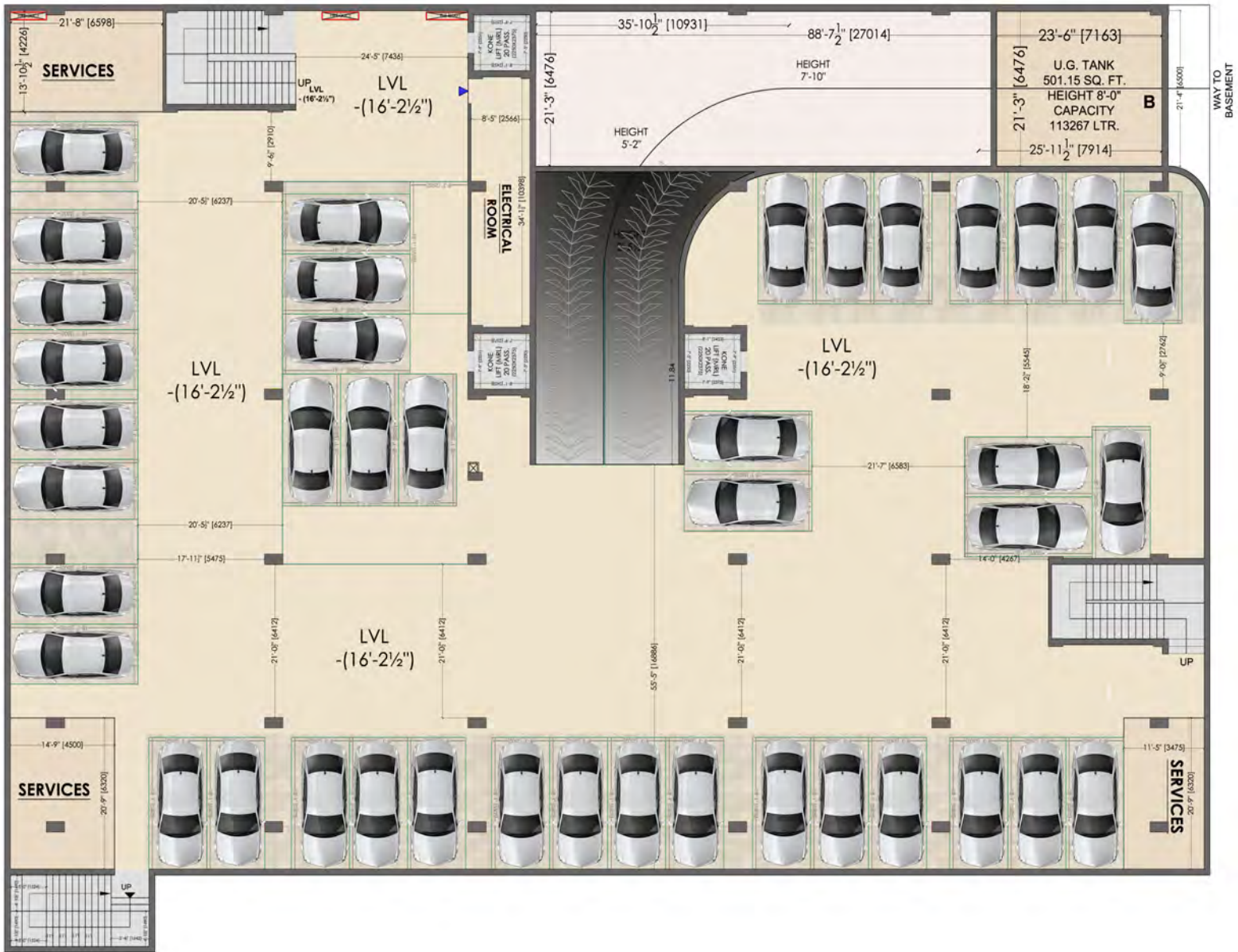
Strategic Location: What's Nearby?

Chaudhary SSH Mall is surrounded by key destinations within 6, 4, and 2 km, including transport hubs, schools, hospitals, Business centers, and residential colonies—ensuring unmatched convenience and connectivity.



BASEMENT PARKING

FLOOR PLAN



RERA Registration No.: UPRERAPRJ979548, available at <https://www.up-rera.in/> | Building Plan No.: GKDA/BP/20-21/0265
Project Name: SSH Chaudhary Mall | The Urban Commercial Address

The project is being developed by HPGK Infra Pvt Ltd ("Developer"), a trusted name in real estate, known for delivering landmark commercial and residential spaces. SSH Chaudhary Mall is a thoughtfully designed urban commercial complex, set to redefine business and lifestyle experiences in Gorakhpur. Spread across 4,458.72 sq. meters with a total constructed area of 8,820.38 sq. meters, SSH Chaudhary Mall integrates retail, leisure, and entertainment into a single dynamic environment. The mall features a strategically planned floor layout: the Upper Ground Floor (UGF) includes 32 retail units along with anchor space; the First Floor (FF), Second Floor (SF), and Third Floor (TF) each offer 53 well-placed shops, creating uniformity and ease of navigation for customers. The layout is designed to support high footfall, flexible leasing options, and excellent visibility for brands. With seamless connectivity, modern infrastructure, and vibrant surroundings, SSH Chaudhary Mall is poised to become a sought-after destination for retailers, entrepreneurs, and lifestyle businesses in the region.

All project specifications shall be as per the final agreement executed with the Developer. Customers are advised to verify all necessary project-related details before making any investment or leasing decision. The official website of HPGK Infra Pvt Ltd is www.hpgkinfra.com. Please do not rely on any other website for information.

CHAUDHARY S.S.H MALL

Gorakhnath Mandir Rd.

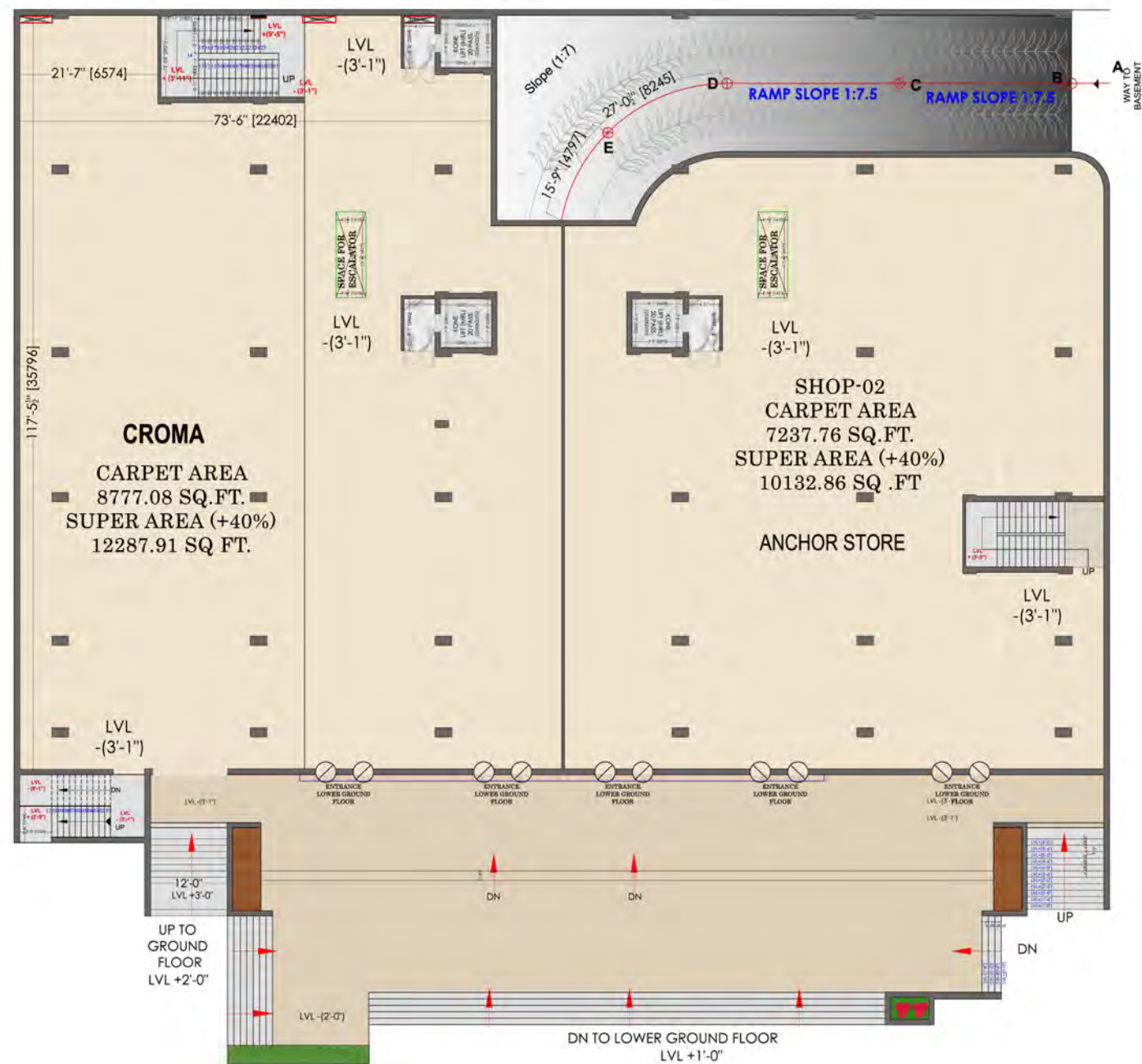
Strategic Location: What's Nearby?

Chaudhary SSH Mall is surrounded by key destinations within 6, 4, and 2 km, including transport hubs, schools, hospitals, Business centers, and residential colonies—ensuring unmatched convenience and connectivity.



BASEMENT- 1

FLOOR PLAN



RERA Registration No.: UPRERAPRJ979548, available at <https://www.up-rera.in/> | Building Plan No.: GKDA/BP/20-21/0265
Project Name: SSH Chaudhary Mall | The Urban Commercial Address

The project is being developed by HPGK Infra Pvt Ltd ("Developer"), a trusted name in real estate, known for delivering landmark commercial and residential spaces. SSH Chaudhary Mall is a thoughtfully designed urban commercial complex, set to redefine business and lifestyle experiences in Gorakhpur. Spread across 4,458.72 sq. meters with a total constructed area of 8,820.38 sq. meters, SSH Chaudhary Mall integrates retail, leisure, and entertainment into a single dynamic environment. The mall features a strategically planned floor layout: the Upper Ground Floor (UGF) includes 32 retail units along with anchor space; the First Floor (FF), Second Floor (SF), and Third Floor (TF) each offer 53 well-placed shops, creating uniformity and ease of navigation for customers. The layout is designed to support high footfall, flexible leasing options, and excellent visibility for brands. With seamless connectivity, modern infrastructure, and vibrant surroundings, SSH Chaudhary Mall is poised to become a sought-after destination for retailers, entrepreneurs, and lifestyle businesses in the region.

All project specifications shall be as per the final agreement executed with the Developer. Customers are advised to verify all necessary project-related details before making any investment or leasing decision. The official website of HPGK Infra Pvt Ltd is www.hpgkinfra.com. Please do not rely on any other website for information.

CHAUDHARY S.S.H MALL

Gorakhnath Mandir Rd.

Strategic Location: What's Nearby?

Chaudhary SSH Mall is surrounded by key destinations within 6, 4, and 2 km, including transport hubs, schools, hospitals, business centers, and residential colonies—ensuring unmatched convenience and connectivity.



GROUND FLOOR PLAN



RERA Registration No.: UPRERAPRJ979548, available at <https://www.up-rera.in/> | Building Plan No.: GKDA/BP/20-21/0265
Project Name: SSH Chaudhary Mall | The Urban Commercial Address

The project is being developed by HPGK Infra Pvt Ltd ("Developer"), a trusted name in real estate, known for delivering landmark commercial and residential spaces. SSH Chaudhary Mall is a thoughtfully designed urban commercial complex, set to redefine business and lifestyle experiences in Gorakhpur. Spread across 4,458.72 sq. meters with a total constructed area of 8,820.38 sq. meters, SSH Chaudhary Mall integrates retail, leisure, and entertainment into a single dynamic environment. The mall features a strategically planned floor layout: the Upper Ground Floor (UGF) includes 32 retail units along with anchor space; the First Floor (FF), Second Floor (SF), and Third Floor (TF) each offer 53 well-placed shops, creating uniformity and ease of navigation for customers. The layout is designed to support high footfall, flexible leasing options, and excellent visibility for brands. With seamless connectivity, modern infrastructure, and vibrant surroundings, SSH Chaudhary Mall is poised to become a sought-after destination for retailers, entrepreneurs, and lifestyle businesses in the region.

All project specifications shall be as per the final agreement executed with the Developer. Customers are advised to verify all necessary project-related details before making any investment or leasing decision. The official website of HPGK Infra Pvt Ltd is www.hpgkinfra.com. Please do not rely on any other website for information.

CHAUDHARY S.S.H MALL

Gorakhnath Mandir Rd.

Strategic Location: What's Nearby?

Chaudhary SSH Mall is surrounded by key destinations within 6, 4, and 2 km, including transport hubs, schools, hospitals, Business centers, and residential colonies—ensuring unmatched convenience and connectivity.



FIRST FLOOR PLAN



CHAUDHARY S.S.H MALL

Gorakhnath Mandir Rd.

Strategic Location: What's Nearby?

Chaudhary SSH Mall is surrounded by key destinations within 6, 4, and 2 km, including transport hubs, schools, hospitals, business centers, and residential colonies—ensuring unmatched convenience and connectivity.



RERA Registration No.: UPRERAPRJ979548, available at <https://www.up-rera.in/> | Building Plan No.: GKDA/BR/20-21/0265
Project Name: SSH Chaudhary Mall | The Urban Commercial Address

The project is being developed by HPGK Infra Pvt Ltd ("Developer"), a trusted name in real estate, known for delivering landmark commercial and residential spaces. SSH Chaudhary Mall is a thoughtfully designed urban commercial complex, set to redefine business and lifestyle experiences in Gorakhpur. Spread across 4,458.72 sq. meters with a total constructed area of 8,820.38 sq. meters, SSH Chaudhary Mall integrates retail, leisure, and entertainment into a single dynamic environment. The mall features a strategically planned floor layout: the Upper Ground Floor (UGF) includes 32 retail units along with anchor space; the First Floor (FF), Second Floor (SF), and Third Floor (TF) each offer 53 well-placed shops, creating uniformity and ease of navigation for customers. The layout is designed to support high footfall, flexible leasing options, and excellent visibility for brands. With seamless connectivity, modern infrastructure, and vibrant surroundings, SSH Chaudhary Mall is poised to become a sought-after destination for retailers, entrepreneurs, and lifestyle businesses in the region.

All project specifications shall be as per the final agreement executed with the Developer. Customers are advised to verify all necessary project-related details before making any investment or leasing decision. The official website of HPGK Infra Pvt Ltd is www.hpgkinfra.com. Please do not rely on any other website for information.

SECOND FLOOR PLAN



RERA Registration No.: UPRERAPRJ979548, available at <https://www.up-rera.in/> | Building Plan No.: GKDA/BP/20-21/0265
Project Name: SSH Chaudhary Mall | The Urban Commercial Address

The project is being developed by HPGK Infra Pvt Ltd ("Developer"), a trusted name in real estate, known for delivering landmark commercial and residential spaces. SSH Chaudhary Mall is a thoughtfully designed urban commercial complex, set to redefine business and lifestyle experiences in Gorakhpur. Spread across 4,458.72 sq. meters with a total constructed area of 8,820.38 sq. meters, SSH Chaudhary Mall integrates retail, leisure, and entertainment into a single dynamic environment. The mall features a strategically planned floor layout: the Upper Ground Floor (UGF) includes 32 retail units along with anchor space; the First Floor (FF), Second Floor (SF), and Third Floor (TF) each offer 53 well-placed shops, creating uniformity and ease of navigation for customers. The layout is designed to support high footfall, flexible leasing options, and excellent visibility for brands. With seamless connectivity, modern infrastructure, and vibrant surroundings, SSH Chaudhary Mall is poised to become a sought-after destination for retailers, entrepreneurs, and lifestyle businesses in the region.

All project specifications shall be as per the final agreement executed with the Developer. Customers are advised to verify all necessary project-related details before making any investment or leasing decision. The official website of HPGK Infra Pvt Ltd is www.hpgkinfra.com. Please do not rely on any other website for information.

CHAUDHARY
S.S.H MALL

Gorakhnath Mandir Rd.

Strategic Location: What's Nearby?

Chaudhary SSH Mall is surrounded by key destinations within 6, 4, and 2 km, including transport hubs, schools, hospitals, Business centers, and residential colonies—ensuring unmatched convenience and connectivity.



THIRD FLOOR PLAN



RERA Registration No.: UPRERAPRJ979548, available at <https://www.up-rera.in/> | Building Plan No.: GKDA/BP/20-21/0265
Project Name: SSH Chaudhary Mall | The Urban Commercial Address

The project is being developed by HPGK Infra Pvt Ltd ("Developer"), a trusted name in real estate, known for delivering landmark commercial and residential spaces. SSH Chaudhary Mall is a thoughtfully designed urban commercial complex, set to redefine business and lifestyle experiences in Gorakhpur. Spread across 4,458.72 sq. meters with a total constructed area of 8,820.38 sq. meters, SSH Chaudhary Mall integrates retail, leisure, and entertainment into a single dynamic environment. The mall features a strategically planned floor layout: the Upper Ground Floor (UGF) includes 32 retail units along with anchor space; the First Floor (FF), Second Floor (SF), and Third Floor (TF) each offer 53 well-placed shops, creating uniformity and ease of navigation for customers. The layout is designed to support high footfall, flexible leasing options, and excellent visibility for brands. With seamless connectivity, modern infrastructure, and vibrant surroundings, SSH Chaudhary Mall is poised to become a sought-after destination for retailers, entrepreneurs, and lifestyle businesses in the region.

All project specifications shall be as per the final agreement executed with the Developer. Customers are advised to verify all necessary project-related details before making any investment or leasing decision. The official website of HPGK Infra Pvt Ltd is www.hpgkinfra.com. Please do not rely on any other website for information.

**CHAUDHARY
S.S.H MALL**

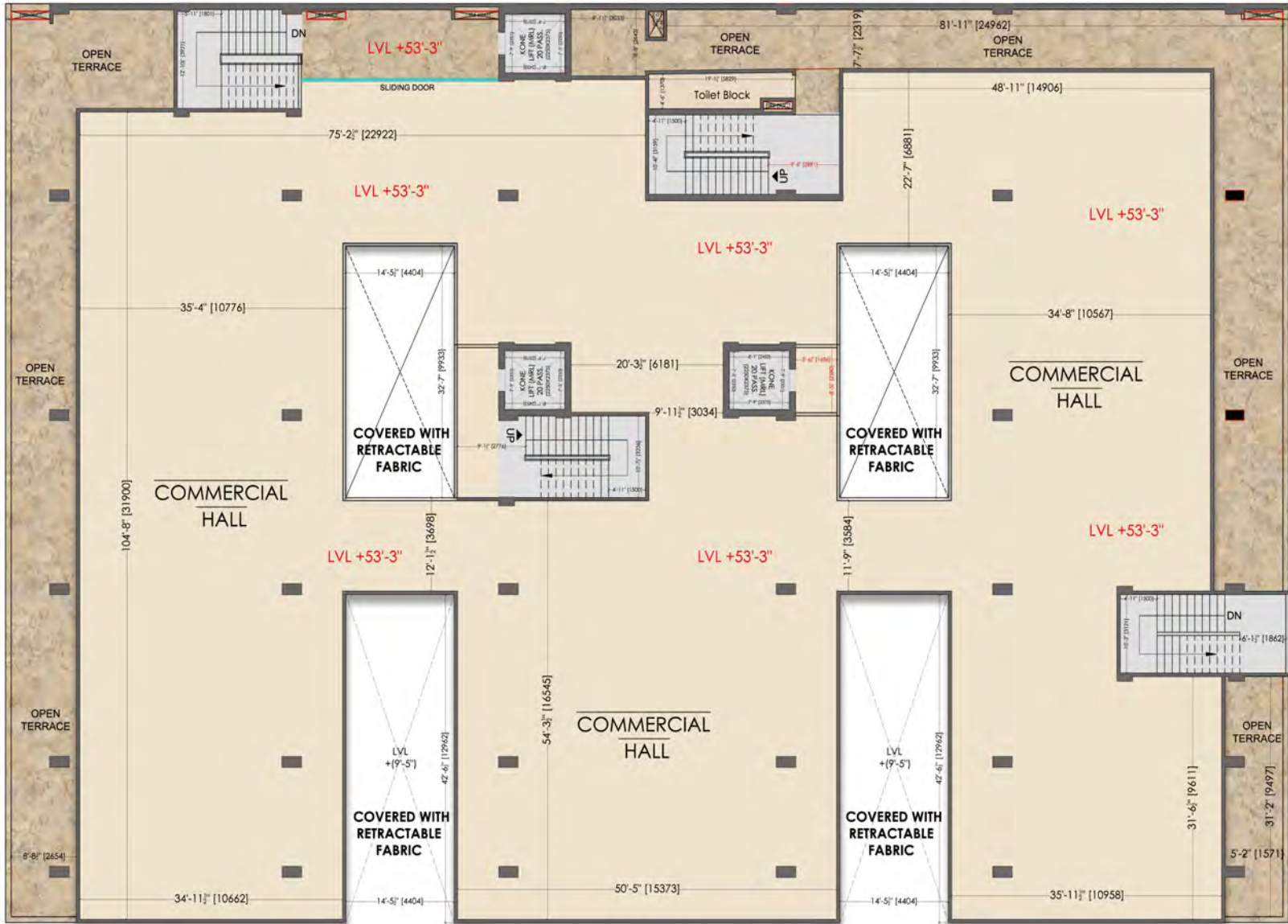
Gorakhnath Mandir Rd.

Strategic Location: What's Nearby?

Chaudhary SSH Mall is surrounded by key destinations within 6, 4, and 2 km, including transport hubs, schools, hospitals, Business centers, and residential colonies—ensuring unmatched convenience and connectivity.



FOURTH FLOOR PLAN



RERA Registration No.: UPRERAPRJ979548, available at <https://www.up-rera.in/> | Building Plan No.: GKDA/BP/20-21/0265
Project Name: SSH Chaudhary Mall | The Urban Commercial Address

The project is being developed by HPGK Infra Pvt Ltd ("Developer"), a trusted name in real estate, known for delivering landmark commercial and residential spaces. SSH Chaudhary Mall is a thoughtfully designed urban commercial complex, set to redefine business and lifestyle experiences in Gorakhpur. Spread across 4,458.72 sq. meters with a total constructed area of 8,820.38 sq. meters, SSH Chaudhary Mall integrates retail, leisure, and entertainment into a single dynamic environment. The mall features a strategically planned floor layout: the Upper Ground Floor (UGF) includes 32 retail units along with anchor space; the First Floor (FF), Second Floor (SF), and Third Floor (TF) each offer 53 well-placed shops, creating uniformity and ease of navigation for customers. The layout is designed to support high footfall, flexible leasing options, and excellent visibility for brands. With seamless connectivity, modern infrastructure, and vibrant surroundings, SSH Chaudhary Mall is poised to become a sought-after destination for retailers, entrepreneurs, and lifestyle businesses in the region.

All project specifications shall be as per the final agreement executed with the Developer. Customers are advised to verify all necessary project-related details before making any investment or leasing decision. The official website of HPGK Infra Pvt Ltd is www.hpgkinfra.com. Please do not rely on any other website for information.

CHAUDHARY S.S.H MALL

Gorakhnath Mandir Rd.

Strategic Location: What's Nearby?

Chaudhary SSH Mall is surrounded by key destinations within 6, 4, and 2 km, including transport hubs, schools, hospitals, Business centers, and residential colonies—ensuring unmatched convenience and connectivity.



Add: UGF 395, 396, 397, 398, 385, Baldev Plaza, Golghar, Gorakhpur, U.P. - 273001

Contact : +91- 85488-77877 | E-Mail: marketing@hpgkinfra.co.in | Web: hpgkinfra.com

RERA Registration No: UPRERAPRJ968366 |  [@hpgk.infra](https://www.instagram.com/hpgk.infra)  [hpgkinfra](https://www.facebook.com/hpgkinfra)  [@hpgkinfra](https://www.linkedin.com/company/hpgkinfra)



RERA Registration No. for RK Mall: UPRERAPRJ979548, available at <https://www.up-rera.in/> | Building Plan No. GKDA/BP/20-21/0265

Project Name: SSH Chaudhary Mall I The Urban Commercial Address

The project is being developed by HPGK Infra Pvt Ltd ("Developer"), a trusted name in real estate, known for delivering landmark commercial and residential spaces. SSH Chaudhary Mall is a thoughtfully designed urban commercial complex, set to redefine business and lifestyle experiences in Gorakhpur. Spread across 4,458.72 sq. meters with a total constructed area of 8,820.38 sq. meters, SSH Chaudhary Mall integrates retail, leisure, and entertainment into a single dynamic environment. The mall features a strategically planned floor layout: the Upper Ground Floor (UGF) includes 32 retail units along with anchor space; the First Floor (FF), Second Floor (SF), and Third Floor (TF) each offer 53 well-placed shops, creating uniformity and ease of navigation for customers. The layout is designed to support high footfall, flexible leasing options, and excellent visibility for brands. With seamless connectivity, modern infrastructure, and vibrant surroundings, SSH Chaudhary Mall is poised to become a sought-after destination for retailers, entrepreneurs, and lifestyle businesses in the region.

All project specifications shall be as per the final agreement executed with the Developer. Customers are advised to verify all necessary project-related details before making any investment or leasing decision. The official website of HPGK Infra Pvt Ltd is www.hpgkinfra.com. Please do not rely on any other website for information.

Disclaimer: All specifications, area details, and plans are subject to final agreements executed with HPGK Infra Pvt Ltd. Prospective buyers and tenants are advised to verify all project-related details from official sources before making any purchase or leasing decision. The official website of HPGK Infra Pvt Ltd will provide the latest project updates and announcements. Please do not rely on any other website.